

# Galt

MUSEUM  
& ARCHIVES



## 2009 ANNUAL REPORT

[www.galtmuseum.com](http://www.galtmuseum.com) | [1.866] 320-3898



## Mission

The Galt Museum & Archives engages and educates our communities in the human history of southwestern Alberta by preserving and sharing collections, stories and memories that define our collective identity and guide our future.

## Vision

The Galt Museum & Archives is a vibrant gathering place that meets historical, cultural and educational needs.

## Values

### Stewardship

- We treasure and protect the stories, objects, memories and relationships of our communities
- We advocate for history, culture and historical education

### Creativity and Innovation

- We thrive on challenge, ingenuity and improvement
- We believe in and foster life-long learning

### Integrity and Authenticity

- We are open, honest and respectful
- We ensure the authenticity of our collections, exhibits, education and programs

### Teamwork and Cooperation

- We encourage diversity of opinion
- We find merit in collaboration and partnerships

### Excellence

- We believe that with dedication, passion and commitment we strive for our best performance
- We respect the skills and expertise of others and cherish diversity



*stories unfolding...*

## CONTENTS

<b>BOARD OF DIRECTORS CHAIR MESSAGE</b>	<b>2</b>
<b>CEO/EXECUTIVE DIRECTOR MESSAGE</b>	<b>3</b>
<b>ORGANIZATIONAL OVERVIEW</b>	<b>4</b>
<b>COMMITTEE REPORTS</b>	<b>4</b>
Cultural History	
Finance	
Fund Development Legacy and Annual Giving	
Governance	
Nominations	
Personnel	
<b>EXHIBITIONS</b>	<b>8</b>
Permanent Exhibit	
Special Exhibits	
Off site	9
Travelling	9
<b>COLLECTIONS AND RESEARCH</b>	<b>10</b>
<b>ARCHIVES</b>	<b>11</b>
<b>LIFE LONG LEARNING</b>	<b>12</b>
Educational Programs	
Public Programs	
<b>COMMUNITY PARTNERS</b>	<b>15</b>
Friends Society of the Sir Alexander Galt Museum & Archives Lethbridge Historical Society	
<b>2009 HIGHLIGHTS</b>	<b>16</b>
Visitor Attendance	
Financial Stability	
Special Events	17
Volunteer Program	17
Marketing	18
Our Gardens	19
<b>2009 DONORS &amp; SPONSORS</b>	<b>20</b>
<b>Statement of Operations (Unaudited)</b>	<b>22</b>
<b>BOARD OF DIRECTORS</b>	<b>23</b>
<b>ORGANIZATIONAL CHART</b>	<b>24</b>
<b>2009 GALT COMMITTEES</b>	<b>25</b>

## MESSAGE FROM THE BOARD OF DIRECTORS CHAIR



The Galt Board has a very busy and interesting year as we focused our energies on the following activities:

- Revising our governance manual and amending memoranda of agreements with the Friends of the Galt Museum and Archives and the Lethbridge and District Historical Society
- Continuing our efforts to achieve financial stability for Galt Museum operations through our Annual Fund Raising Campaign and our Endowment Fund within the Lethbridge Community Foundation
- Working within a standing committee structure with Board members chairing committees, staff members liaising with committees, and involving interested community members on some committees
- Reviewing Strategic Plan goals and then continuing to work toward achieving these goals
- Assisting the Southern Alberta Regional Museum Network to take flight
- Welcoming two new Board members for three year terms

The Galt Museum continues to “do the city proud”; and the Board, on behalf of the City, continues to provide the care that our history deserves. Thanks to the City of Lethbridge for its confidence in our Board, our amazing Staff, and our work for the citizens of our community.

Respectfully submitted,

Lucelle M. Prindle, Ph.D.  
Chair, Board of Directors

## MESSAGE FROM THE CEO/EXECUTIVE DIRECTOR



What a pleasure the past year has been! It is a joy to see our community gathering at the museum. The facility was a busy place with school children, museum goers, special events and community celebrations.

Our special exhibits on Everett Soop, The Mighty Bridge and Dinosaurs were appreciated by many. Over 13,000 visitors came to see the Bridge exhibit alone. With the help of the Buddhist community, we added artifacts to our main exhibit area. Working with local students, artists and experts, other areas of the Galt were filled with images and stories through the last year. Audio tours were added to the list of choices for our visitors. We travelled two of our exhibits to Saskatchewan and Calgary.

We worked in the region to produce another successful year of "Get Outta Town" tours. With our new community programmer, we provided more opportunities for families to learn and socialize together. At times, our Saturday programs accommodated over one hundred people. Our school programming remained strong, serving over 8,500 children and youth.

We built collections, exhibits and programs with our community. We built gardens with the Galt School of Nursing Alumnae and Lethbridge and District Horticultural Society. Our north sidewalk was put in! The Friends of the Galt

endowment was established. We increased our sponsorship activity and our earned income.

We communicated and engaged our audiences through the web and web 2.0 methods. Galt staff taught courses and spoke at conferences.

We relied on the strengths of this community, our staff, volunteers and board. Thank you for 2009 and the foundation for the future.

Respectfully submitted,

Susan Burrows-Johnson  
CEO/Executive Director



## ORGANIZATIONAL OVERVIEW

The Galt plays a vital role in preserving and interpreting the material culture of Lethbridge and area. The Museum cares for a growing collection of well over 20,000 artifacts and 300,000 archival documents and photographs. The Galt's Archives contain an extensive collection of information on the human history of Lethbridge and southwestern Alberta. The history of Lethbridge and southwestern Alberta can be explored through the museum's rotating exhibitions, special events and weekend programs. The Galt Museum Store offers visitors a selection of historic publications and other unique local products.

The Galt is well respected in Alberta's museum community, has a growing national profile and is committed to international museum standards. In 2007, the Galt received Recognized Museum designation from the Alberta Museums Association.

### Core Business Areas, Programs & Services

#### Archives and Collections

*The role of Archives is to collect, preserve and make available to our customers information relevant to the study of the human history of Lethbridge and southwestern Alberta. Core activities include:*

- Acquiring information-based items/fonds according to established legal and curatorial policies and practices
- Arranging and describing items/fonds according to accepted archival practices
- Ensuring that necessary conservation work is performed in a timely manner and within the available resources of the Archives
- Storing the item/fonds in a manner that ensures their preservation
- Facilitating public access to holdings through finding aids
- Assisting researchers in understanding the materials
- Providing copying services

#### Collections Management

*The role of Collections Management is to professionally preserve and store artifacts/information held in trust by the Galt, and to ensure that present and future generations have access to the same. Core activities include:*

- Registering and cataloguing all incoming material and its respective information, including loans and donations
- Supporting management and the Cultural History Collection Committee in the formulation of the Galt's accession and de-accession policy
- Utilizing preventative conservation techniques in order to lengthen collection's lifespan
- Researching both new and existing artifacts
- Continually assessing and improving the Galt's artifact storage systems
- Maintaining the Galt's environmental and pest management programs
- Managing and monitoring artifact and facility security
- Supporting Exhibits and Programming
- Providing services to external customers (loans, access to objects for research purposes, regional museums support, etc.)

#### Exhibits

*The role of Exhibits is to design, fabricate, install, and maintain all exhibits and displays. Core activities include:*

- Designing all aspects of an exhibit, including
  - Fabricating three-dimensional aspects (cases, mounts, panels, floors)
  - Coordinating the two-dimensional aspects (relates to information panels, photos and paper materials)
  - Coordinating the installation
- Maintaining the exhibits
- Supporting Programming, Archives, Administration, Collections Special Events and Gift Shop
- Coordinating the takedown and storage of exhibits
- Extending the life of the exhibits (e.g. travelling options, display at local venues)

### Curatorial

*The role of the Curatorial department is to oversee the development of collections and engaging exhibits at the Galt. Core activities related to exhibit development include:*

- Managing, planning, and developing the exhibitions program by creating and/or supervising the budgets, regulation, procedures, and guidelines
- Preparing a long-range plan for refreshing the permanent exhibit
- Curating and developing temporary exhibitions for the Galt
- Hosting and/or presenting informative evenings through the Curator Presents program
- Liaising with museums and galleries to rent traveling exhibits
- Providing input with respect to exhibit design

*Core activities related to collection development include:*

- Develop Collections Plan for future acquisitions in accordance with Galt Collections Policy, and undertake and supervise all actions related to collection donations and purchases
- Acquire, record, research and oversee the management of the Galt's collections with the support of Curatorial department staff
- Ensure Collections policy is reviewed & followed

### Interpretive and Educational Programming

*The role of this department is to impart knowledge and information, facilitate the visitor's search for meaning and relevance in relation to the collection and exhibits, and assist visitors in making a personal connection with the Galt. Core activities include:*

- Developing, designing, and researching interactive, multi-dimensional programs that cater to a wide variety of age groups, interest levels and visitor types and which are based on educational theory and Visitor Services research and, if relevant, the Alberta Curriculum.
- Delivering educational programs
- Training staff and volunteers in casual and structured interpretation
- Working with other departments to ensure that visitor needs as related to learning, interpretation, and connectivity are enriched and enhanced

*Currently, programs include:*

- Day education and school curriculum work
- Adult
- Family
- Guided tours
- Back pack (drop in)
- Loan (memory boxes and educational artifacts)

### Value Added Business Areas

#### Special Events

*This area produces culturally significant celebrations as well as other unique activities designed for many diverse segments of the population. Activities within this area include:*

- Planning and delivering special events (from start to finish)
- Partnering with businesses to increase opportunities for sponsorship
- Collaborating with other organizations to enhance programming and reduce duplication of events in the community

#### Galt Museum Store

*The Galt Museum Store enhances exhibits, complements programming with related product lines/interpretation, and serves as a venue for local authors and artists. The Galt Museum Store staff also sells museum admissions and event tickets, provides visitor and tourist information and facility orientation, and answers visitor questions and inquiries related to the exhibits, programs, and events.*

#### Facility Rentals

*This area provides a unique facility and services for use by many diverse segments of the community. The Galt enhances its revenues through rental of its facilities. It also provides an additional opportunity for members of the community to visit the facility and become familiar with its services. Facility rentals support our mandate by providing the community an opportunity to create new stories about their lives, where the Galt has served as the backdrop.*



**Support Areas**

Marketing/Communications

*Marketing/Communications supports the operations of the Galt by promoting the Galt as a pivotal attraction, locally and regionally. Activities include:*

- Working with the Galt departments to raise public awareness with respect to museum exhibits, collections, archives, programs, events, and accomplishments
- Networking with surrounding communities, chambers of commerce, museums/historic sites, tour companies and tourism associations
- Branding and marketing
- Fundraising
- Building mutually beneficial partnerships and participating in community enhancement programs

Volunteer Program

*The volunteer program provides opportunities for interested individuals to support the work of various museum departments. The volunteer program provides vital support to meet business plan goals in areas of visitor services, program delivery, customer service, and collections care.*

*Activities within this support area include:*

- Screening and placement of volunteers
- Training and monitoring of volunteers
- Tracking volunteer participation
- Managing risks associated with the volunteer program
- Rewarding volunteer contributions to the Galt

Museum Administration

*The role of the Museum Administration is to ensure the efficient and effective management of financial, human, and physical resources at the Galt. Activities include:*

- Budgeting and business planning
- Performing duties related to office administration
- Managing museum finances
- Stakeholder reporting (qualitative and quantitative) i.e. the Board, the City of Lethbridge, etc.
- Managing human resources (including hiring, performance evaluation, and time keeping)
- Administering grants and donations
- Developing and implementing operational policies

## COMMITTEE REPORTS

### Cultural History Collection

The main function of this Committee is to review three-dimensional items submitted by members of the public for possible inclusion in the museum's collection. It generally meets twice per year. Dialogue and consultation is extensive as the items brought into the museum collection are preserved for the future citizens of the area. The Board of Directors makes the final decision on the acceptance of a piece as part of the artifact collection.

Submitted by Chris Epplett

### Finance

The Committee reviews the monthly progress of the organization against our three year budget. Ongoing review of the financial systems for policy compliance and best practices is part of the monthly meetings. The committee has been supportive of the improved presentation of statements and refinement of accounts.

Submitted by Fred Baskerville

### Fund Development - Legacy

During 2009, the Legacy component of our fund development group and the Friends of the Galt completed the research and process to set the endowment in place. The Lethbridge Community Foundation was chosen to house the fund. The committee spent time on understanding the basic information related to endowment building. A basic plan to use planned giving as our vehicle is in place. Draft work on the first brochure is completed.

Submitted by Fred Baskerville

### Fund Development – Annual Giving

This hard-working Committee gives Galt supporters an annual opportunity to invest in our future. It met 7 times, usually after work hours, and had a second successful year in raising donations and selling annual passes.

Submitted by Isabelle Henderson

### Governance

The Committee reviewed the governance section of the board manual and suggested several revisions to the text. The revisions tightened up the section and removed text that had become redundant since the section was first written a few years ago. The important and still relevant content was preserved and edited for clarity. The exercise helped to clarify the role of the CEO with the board and other organizations that support the Galt. The result of the review is a shorter document that is an accurate description of the current governance structure used by the Galt board.

Submitted by Edith C. S. Olson

### Nominations

The main function of this Committee is to solicit potential community members to apply to become Galt Board members. The Committee invites board members to supply skill requirements and names of possible new board members. The committee contacts these people to provide additional information. The committee works with the City Clerk's office to put the packages of information together and to provide a Board member for the selection committee process.

Submitted by Lucelle M. Prindle

### Personnel

The main function of the personnel committee is to provide an Annual Performance Evaluation of the Executive Director/CEO of the Galt. The committee asked the CEO and the Board for its input on the process. The Board did suggest that we review the CEO's job description as a beginning to the evaluation. The committee then proceeded to review the job description with the CEO, discuss the objectives and activities undertaken, and then the chair of the committee wrote the Performance Evaluation.

Submitted by Lucelle M. Prindle

**EXHIBITIONS**

**Permanent Exhibit**

A new Orientation to the Discovery Hall and a revitalization of the *Flying High* exhibit were designed, following feedback from our stakeholders. Changes will be made in 2010. The *Japanese Experience* exhibit was adjusted to accommodate two cases containing artifacts from the Taber Buddhist Church from the 1940s to 1960s. This exhibit was prepared with community assistance and it was blessed in a small ceremony after its installation.

**Special Exhibits**

**Everett Soop: Journalist, Cartoonist, Activist**  
 JAN 31 to APR 26 | ATTENDANCE: 4,891



Soop, a member of the Kainai First Nation, was a tenacious and determined critic of native issues at the local and federal levels and he expressed his opinions in cartoons and essays published in the *Kainai News* and many other native and non-native publications. He suffered from muscular dystrophy from the time he was a teenager and so it followed that he became an advocate for people with disabilities.

Organized and circulated by The Nickle Arts Museum, University of Calgary supplemented with original cartoons borrowed from the Glenbow Museum.

**The Mighty Bridge**  
 MAY 09 to SEP 20 | ATTENDANCE: 13,258



The Mighty Bridge exhibit celebrated the Centennial of the High Level Bridge. Through artifacts from the Galt, Glenbow and California State Railway Museums and photographs from the Galt Archives, the construction and maintenance of the bridge and the significance of the CPR to the economy and development of southern Alberta were described.

Mike Davis provided complimentary space in the show room at Davis Pontiac Buick GMC to exhibit the CPR Inspector's Car as an extension to the in-house exhibit and Nick Czibere from Zero Gravity Crane & Rigging moved it to and from the warehouse at no cost. Andrea Rude, Assistant Manager at Toys "R" Us, loaned an Imaginarium train set and play table for hands on activities. Kevin Sali, CPR Manager from Kipp Rail Yards and Richard Carr from Lethbridge Iron Works both supported the Galt through access and information. Jay Johnson and Jim Wills from Theatre Department at U of L painted the floor mural at a minimal cost.

We are very grateful for the sponsorship for this exhibit - provided by the Association of Professional Engineers, Geologists and Geophysicists of Alberta (APEGGA) and local companies associated with APEGGA Associated Engineering Alberta Ltd., EBA Engineering Consultants Ltd., Hasegawa Engineering Ltd., ISL Engineering & Land Services Ltd., MPE Engineering Ltd., and Stantec Consulting Ltd. As well, the Teamsters Canada Rail Conference donated money in support of this exhibit.

**Dinosaurs & Company**

OCT 17 to JAN 31, 2010 | ATTENDANCE: 6,594



This exhibit featured information on dinosaurs that lived in Alberta over 75 million years ago, their environment, living conditions, diet, and animals which co-existed. Dinosaurs seemed to be intelligent and well-adapted to their environment. Then, why did they disappear? Theories of their disappearance and information about the scientists who are uncovering this ancient history were included.

*Coproduced by the Exhibition Production Centre of the Musée de la nature et des sciences de Sherbrooke, the Montreal Planetarium and the Musée de Paléontologie et de l'Évolution and sponsored by the Quebec Ministry of Culture. Supported by Canadian Heritage Exhibit Circulation funding.*

MAIN LEVEL HALLWAY

**Moods of the Bridge** MAY 09 to SEP 20

The Lethbridge Photo Club partnered with the Galt in this exhibition of juried Club members' images.

**Juno Beach – A Journey of Honour** NOV 07-JAN 31, 2010

Photos and student albums, posters and poetry based on research done to honour soldiers who died at Juno Beach in 1944.

MAIN LEVEL MEETING ROOMS

**Archives Exposed...** A recurring exhibition of archival photographs was shown twice in 2009.

- **Everett Soop...** Photos of social cartoons created by E. F. (Ted) Hagell.
- **Dinosaurs & Co.** Photos of dinosaur models and dinosaur country in southern Alberta.

**Art Walk 3 Dimensions Sculpture Show** SEP 16-18

Second annual Art Walk sculpture show featured 18 submissions in a variety of media, genre and styles. Artist demonstrations occurred each afternoon. Three volunteers from the community assisted with the exhibit from start to finish.

LOWER LEVEL GALLERY

**In Pursuit of Fair Trade** JAN30 to APR 30

Starsha Battrick, guest curator, installed an exhibit based on a U of L student trip to Ecuador where the group visited the village of Principal and interviewed and photographed women in a Fair Trade cooperative. Their products were featured in the exhibit and offered for sale in the Museum Store. Photos were then posted on the Galt's Flickr photo site.

**Art of the Bridge** MAY 09 to SEP 20

Members of the Lethbridge Artists Club presented 14 paintings of the bridge.

**Dinosaur Finds!** OCT 17 to JAN 31, 2010

Photos and personal artifacts celebrating Wendy Sloboda, a local woman with many significant fossil finds in Alberta, Saskatchewan, Argentina and Mongolia.

ARCHIVES REFERENCE ROOM

**Treasures in the Archives** MAY 09 to SEP 20

Documents from the Archives relating to the Bridge and the CPR included framed copies of engineering drawings.

Off site

Our case in the entrance foyer of the Lethbridge Public Library promoted 2009 special exhibits. The case at Lethbridge Police headquarters case changed over to new topic, and a case was set up at the Lethbridge Senior Citizen's Organization.

Travelling

**For you the war is over. Second World War POW**

**Experiences** JUN 06 to JAN 03, 2010 | ATTENDANCE: 34,204 [incl.12,000 on Remembrance Day]

Shown by the POW Exhibit Partners at The Military Museum in Calgary.

**Vanishing Landscapes** DEC 01 to JAN 29, 2010

Estevan Art Gallery & Museum, Saskatchewan.

## COLLECTIONS AND RESEARCH

### Collections Activity Summary

	Offers	#Pieces Offered	Offers Accessioned	# Accessioned
2009	40	402	33	113
2008	35	353	33	69
2007	62	549	54	224
2006	23	171	49	397

The Cultural History Collection Committee met twice in 2009 to review the recommendations for donations submitted by staff. The committee's decisions were reported to the Board for final approval.

### Highlights of Accessioned Items:

- One **Webley Revolver**, c. 1891/92 donated and altered by Bronze Sculptor Corne Martens.
- A **Limoges China Tableware Set** owned by Christina Reid Birrel who emigrated from Scotland to Lethbridge in 1909. Birrel was married immediately upon arrival in Canada and soon after ordered the 12-setting tableware from France for use in the City.
- **50s era Men's Drape Pants and one YMCA Leader Jacket** donated by Dr. W.M. (Tim) Myers. Myers was a young resident of Lethbridge and a YMCA member in the early 50s.
- **Two Smith & Wesson Semi-automatic Handguns** used until October 2008 by the Lethbridge Regional Police Service. One handgun was issued to Police Chief Tom McKenzie. Shortly after accessioning, the Galt experienced challenges related to the firearms' registration on account of federal regulation changes in 2008. These challenges are still ongoing.
- **One WWII RCAF Flight Helmet** originally owned by Lancaster Tail Gunner the late Mr. Len Issacson. He survived 31 bombing missions and his story is well documented in Garry Allison's book *The Prairie Boys*.
- **1 Christening Gown**, c. 1897-1901 originally worn Francis (Frank) Herbert Watson (b. 1900). Watson's grandparents were early Lethbridge pioneers Job and Mary Elizabeth Reed.
- **28 Assorted Nursing Objects**, related to the nursing career of donor Pat Sassa. Sassa began her nursing studies at the Galt School of Nursing in 1956, graduating in 1959.

- **Work Box and Contents** donated by Mrs. Katherine Twiss, granddaughter of William (Mayor) & Margaret Henderson. Twiss was sent by her mother to take art lessons from one of Lethbridge's first art instructors, Miss. Edith Kirk (1856-1953). Kirk was befriended by Twiss' mother (Margaret (Etta) Henderson Ives) when Kirk arrived in Lethbridge. Henderson is thought to have assisted Kirk with her settlement in Lethbridge. According to Twiss, the box (ca. mid 1800s) belonged to Kirk's mother who died prematurely. Upon Kirk's passing, the box and contents were left to Twiss.

Use of artifacts is up from 2008, approaching levels seen in 2006 when the Discovery Hall was installed. Unprecedented to date, was the use and crating of close to 100 artifacts included in traveling exhibits.

Collections provided two public tour programs. The Adopt an Artifact program provided program access to 65 artifacts in November. Twenty-three recent acquisition artifacts were posted on to the Galt's website.

2009 requests for service were well above average, including a request from Southern Alberta Art Gallery to house its Fine Art collection during its facility expansion project (2009-10).

Collections tours were provided to students from the U of L's Sociology and Fine Arts Departments and the Lethbridge-based Alumni of the U of A.

Dozens of existing records were enhanced as a result of hallway and satellite-based exhibits. Collections worked with *Lethbridge Living Magazine* to profile objects from the collection leading to improved documentation.

A query by the Royal Alberta Museum led to a significant improvement in documentation related to a 1992 donation of a nursing sister's uniform. Through contact with the donor, we gained insight into the uniform's history of possession/transfer as well as receiving service records, photographs and a complimentary artifact(s) donation.

Collections was successful in securing a fair market value for the insurance of its Javelin Trainer by professionals at CFB Shilo's RCA Museum.

Significant preservation initiatives included re-housing the Galt's firearms collection. Calgary-based Objects Conservator Sue Cross performed a conservation treatment on the Taber Shrine made possible by an AMA awarded grant.

**ARCHIVES**

**Donations**

Collection donations 83

**Customer Service**

**Method of Contact:**

E-mail 137  
 Fax 1  
 Mail 2  
 Telephone 130  
 Walk in 513

**Research Category:**

Club / Society 42  
 Education / Outreach 103  
 Elementary Teacher 34  
 Secondary Teacher 27  
 Genealogist 89  
 General Interest 103  
 Government 7  
 Media 29  
 Staff 49  
 Post Secondary Teacher 9  
 Professional / Business 89  
 Elementary Student 34  
 Secondary Student 18  
 Undergraduate Student 148  
 Graduate Student 2

**Days of the Week**

Monday 148  
 Tuesday 222  
 Wednesday 214  
 Thursday 88  
 Friday 111

**Place of Origin**

Lethbridge 580  
 Alberta 90  
 Canada 69  
 International 18  
 Unknown 26

**Total Number of Researchers** 783

**Gallery Visitors (estimated)** 200

**Archives Online**

Unique views 5,315  
 Page views 6,697  
 Average length of visit 2.27 minutes

**Volunteer Projects**

Thanks to volunteers in the Archives for:

- Assistance in scanning 10,649 images
- Arrangement and description of selected fonds
- Assistance in re-arranging collections to maximize storage space
- Refiling collection items
- Customer service
- Numbering photographs and negatives
- Scanning photographs and negatives

**Activities & Highlights**

**Cataloguing**

*Cataloguing of The Lethbridge Herald Fonds (2<sup>nd</sup> accession) continued, and scanning and cataloguing of the 35mm slides that form part of the Oldman River Regional Planning Commission Fonds began. The Archives' backlog of donated fonds was reduced with the cataloguing of virtually all of the donations made to the end of 2002.*

**Scanning**

*The majority of the images scanned are from The Lethbridge Herald fonds (2<sup>nd</sup> accession). Special thanks go to volunteer Jim Boychuk for the 20 hours he put in each week on this work.*

**Grants and Fund Raising**

*On November 9 the Playgoers Club of Lethbridge presented a cheque to the Archives in appreciation of assistance and support they received in digitizing their history scrapbook.*

**Visitor highlights**

*The numbers of elementary school teachers and students who visited the Archives rose substantially. Orientation tours and customer service was provided to elementary students and teachers from various schools in Lethbridge as part of Historica's Heritage Fair competition, which has provided an opportunity to reach a group of people who were not significant Archives users before.*

*Other visitors included Lethbridge College Environmental Studies students for information about a class-assignment selected property in Lethbridge, as well as the University of Lethbridge History 2222 class for a primary source analysis essay.*

## LIFE LONG LEARNING

The Galt continues to have a strong reputation for its Educational and Public Programs.

**Educational Programs: 8,563 students!  
1,457 adults!**

The Educational Programs at the Galt continue to draw schools from across southern Alberta. Hands-on exploration with artifacts and documents, tours, story-telling, personal connections, and exploration help bring our local history alive for students of all ages. And through these experiences, students develop historical thinking skills that will serve them well in a complex and changing world. And, mixed in with the learning, is always a good dose of fun!

The Galt continues to offer curriculum coordinated programs for students from daycare to post-secondary. Designed to better connect the experience at the museum with the classroom work, teacher's manuals provide background information and activities to continue the museum experience back in the school.

In addition to our regular school offerings, students also participated in programs around our special exhibits. A year starting with Egypt and ending with dinosaurs is sure to be a hit with many students.

Lethbridge schools continue to be the largest users of Educational Programs with classes coming numerous times throughout the year. Students develop a sense of ownership and familiarity with the museum that help develop respect and knowledge of the role of the museum. Many students express an interest to volunteer or work at the museum when they're older.

In 2009, 5328 students used the Galt's bus service and 248 buses were booked through LA Transit. Teachers repeatedly say how much they appreciate the busing program as schools experience an increasingly difficult time finding drivers. Special thanks to Lethbridge Iron Works and the Friends of the Galt Society for their support of this program.

The Galt was invited to share our approach to developing historical thinking skills in students with presentations at two Teachers' Conventions.

### Historica Heritage Fairs

The Galt was once again involved in the co-ordination of the Southern Alberta Regional Historica Heritage Fair. The fair was held at the Lethbridge Centre in May. Children from Medicine Hat to Fort Macleod participated in the Fair. Students also participated in the National Fair in Ottawa in July 2009. There may be changes ahead for this program as we learned late in 2009 that Historica (which has joined with the Dominion Institute to form Historica Dominion) has stopped support of this program and canceled future national fairs. Work is being done provincially and nationally to provide support for the fairs and to work towards re-development of a National Fair.

### Coulees & Culture Day Program



Since the 1990s several community groups have worked together to offer the Coulees & Culture Day Program. Throughout the week, participants discover Lethbridge's historical, cultural and natural treasures by exploring a different site each day. Originally offered as a ½ day program, today the program is a full-length program offered three times throughout the year (Easter and two weeks in summer). Designed for children aged 6-9 and organized annually by a partnership of the Southern Alberta Art Gallery, Helen Schuler Nature Centre and Galt Museum & Archives, Coulees & Culture is a day camp experience unlike any other.

## Public Programs: 2,241 participants!

The Galt endeavors to provide an experience for each visitor that is uniquely theirs. For its size of facility and staff, the Galt offers an impressive range of programs:

### Café Galt

*Café Galt continued to be offered monthly throughout the year (except in July/August) and continued to be linked to the Special Exhibit. The exhibit opens at 6pm to allow visitors to tour the exhibits, and to visit over refreshments, prior to the program beginning at 7pm. Overall, the program welcomed 344 guests, several children attended but this is primarily an adult program. Speakers included:*

- **Shawn Bubel** Digging in the Near East
- **Redskins, Tricksters and Puppy Stew** National Film Board documentary on First Nations identity
- **Blanche Bruised Head** As a Trickster
- **Geoff Meyering** Breaking Through Stereotypes
- **John Gilpin** History of Railroad and Highway Bridges in Alberta
- **Bill Hillen** History of an ARCC Train Station 1890-2009
- **Belinda Crowson** Legends and Lore of the High Level Bridge
- **Shane Tolman** Wally's Beach Archeological Site
- **Chrissy Foreman** Mega Extinction
- **Wendy Sloboda** Dinosaurs of Southern Alberta

### Guided Tours

*The Galt has a repertoire of on and off-site tours which can also be booked by the general public, organizations, businesses, and as part of facility rentals.*

- **Galt Hospital Tours**
- **A Remembrance Day Collections Tour** was offered in November to provide public behind-the-scenes access.

### Cemetery Tours

**Day Time: Mountain View Cemetery and St. Patrick's** offered May to September. Most people purchased their tickets at the gate, with attendance ranging from 1 to 30+.

**Flashlight: St. Patrick's** Sold-out tours offered in October and available for private bookings.

- **Bus Tours** [June-August] linked the past, present and future for guests through expert interpretation of southwest Alberta history including: Waterton, Windmills, Hutterite culture and history, Kainai culture and history, and Agriculture.
- **Downtown Tours**
- **General Museum Tours** Offered by staff and volunteers on request from various community groups who choose the topical focus of the tour.
- **Downtown Historic Audio Walking Tour** A partnership project was initiated with Downtown Lethbridge BRZ, City of Lethbridge Heart of Our City and Economic Development departments, Allied Arts Council of Lethbridge and VoicePrint Canada to create the pilot for a tour of podcasts of the downtown Business District.
- **People on the Wall Podcasts** A partnership project with VoicePrint Canada and great volunteer voice talent, saw the creation of audio tours describing the 27 portraits hanging along the north and west walls of the Discovery Hall. These are downloadable from the Galt website and the iTunes store, and on audio wands from the Galt Museum information desk.

### Saturdays at 1:00

*This family program encourages kids of all ages to attend the museum with their caregivers and engage in interactive, hands-on and experiential, programs linked to the special and permanent exhibits. In 2009, approximately half of the 569 people attending the program were children aged 2-12. Beginning in October 2009, we expanded the program to include*

programs linked to the permanent gallery in addition to the special exhibits, and offered the program on holiday weekends, and between special exhibits. Programs included:

- Edible bridges
- Straw paintings
- Paper plane races
- Recycled materials bird houses
- The bird-dinosaur connection
- International festivals of lights



**Memory Boxes/  
Education Artifact Loans**

*Boxes are used by senior centres/recreation therapy professionals and schools; of particular interest around certain holidays and events. These continue to be well requested.*

**Everyday Interpretation**

*The everyday interpretation of the exhibit is enhanced by the welcoming front desk staff who orient the visitors to the museum exhibits and services. Volunteer, and summer student, roving interpreters continue to help enhance visitor experience by answering questions and providing impromptu tours to visitors. During the summer the impromptu tour attendance exceeded the attendance at our scheduled exhibit tours. Treasure hunts created for children for Discovery Hall and for each special exhibit encourage children to engage with the exhibit and search for various items on display. Additionally, translation efforts continue with brochures being translated into Chinese, Spanish and French.*

**Community Days**

*Community day programs are offered free to the public on exhibit opening days, and other special celebrations such as Canada Day. In 2009, there were four Community Days, which welcomed 2213 non-admission participants. The programs include activities for children and adults including:*

- A film about the high level bridge with live music
- A Canada-Day themed treasure hunt and games
- Dixie-cup fossil casting

**Historic Lethbridge Festival**

Galt staff coordinated the 6th annual Historic Lethbridge Festival held May 2-8 with the assistance of a steering committee including representatives from the Lethbridge Public Library, University of Lethbridge and Lethbridge Historical Society.

**Wild Tales on Park Trails**

The Galt Museum & Archives and Helen Schuler Nature Centre continued its Wild Tales on Park Trails partnership in 2009. Four programs were offered in July and August in order to raise appreciation and understanding of the natural and cultural history of Lethbridge’s parks.



## Community Partners

### Friends Society of the Sir Alexander Galt Museum & Archives

The Friends Society of the Sir Alexander Galt Museum & Archives continued to meet their mandate by supporting educational programs at the Galt. The Friends provided funding that was used to bus students to the Galt thereby allowing them to participate in the Galt's excellent programs. Further, Friends' funds purchased teaching aids in support of these educational programs.

The primary focus in 2009 was to facilitate, encourage, and work with the Galt Board of Directors to create the "Friends of the Galt Endowment Fund". This Endowment Fund is managed by the Lethbridge Community Foundation and will benefit the Galt in perpetuity. The Friends made an initial contribution of \$15,000 to establish the Fund. The Friends plan to fund the development of promotional materials to encourage the citizens of Lethbridge and the southern Alberta Community to contribute to the Endowment Fund and provide ongoing support for Galt programs.

During the year, the Friends were granted a casino by the Alberta Gaming and Liquor Commission that was used to acquire funds that will support Galt educational programming over the next two years.

The Friends look forward to contributing to the support of the Galt throughout 2010.

### Lethbridge Historical Society

The year 2009 has been incredibly busy. The Lethbridge Historical Society continued its monthly programs and speaker series. For the 2009/2010 program series our topic was "What is history?" From Narcisse Blood's presentation on Blackfoot History, to Amy von Heyking's report on how history has been and continues to be taught in Alberta School and Sheila McManus' look at history in the academic world, the LHS had many discussions on the role and relevance of history. This series continues throughout the spring months of 2010 with more different perspectives of history.

Two books were published by the society in 2009 – John Dormaar's, *Alberta's 49th Parallel*, and our new book on the High Level Bridge the Lethbridge Viaduct. Lethbridge Historical Society books continue to sell amazingly well thanks to the hard work of the Book Committee. Book launches for these books were well attended. Three books are in progress and are slated to be published in 2010.

Irma Dogterom has resigned as the newsletter editor of the LHS (a position she has held since 1991). Bobbie Fox will be taking over newsletter responsibilities in January 2010.

The 6th Annual Historic Lethbridge Week was in May. It was another successful year and plans are under way for next year.

Four plaques were unveiled in the downtown in 2009 (Alec Arms, Conservatory of Music/Crazy Cakes, Oddfellows Hall and The Point). Plans are underway to unveil nineteen plaques in 2010, including seven for Chinatown, several at Pearce Park and one in conjunction with the military for the 100th Anniversary of the Artillery in Lethbridge.

Through letter writing, by sitting on various committees, advocating and much more, the LHS and its members have been very active in promoting historic buildings and sites. This is often a thankless job and so many people do not recognize the importance of historic buildings until they are gone. It is also a job that never ends because as soon as one building is saved, another seems to have been put in danger. Thank you to all who remain vigilant and speak up for these buildings.



**2009 HIGHLIGHTS**

Visitor Attendance

Paid & free days	14,115
Archives	520
Community Programs	2,241
School Programs	9,958
Bookings	12,917
Events	3,682
<b>Total</b>	<b>43,433</b>

Visitor Demographics - geography

Lethbridge	60 %
Southern Alberta	16 %
Other Alberta	6 %
Canada	11 %
International	7 %

Memberships/Annual Passes

*The majority of our memberships and annual passes are held by local residents who benefit from free admission to the Galt.*

Corporate	Adult	Student Senior	Family	TOTAL
4	40	67	289	<b>400</b>



Financial Stability

Revenue Generation

*The Galt wishes to diversify its revenue streams.*

Admissions & Memberships	\$ 36,733
Museum Store	134,247
Special Events & Campaigns	30,193
Program Fees & Archives	22,343
Grants & Donations	108,522
Facility Rentals [net]	20,693

Facility Rentals

*Coordinated by Lea-Ann Owsley and staffed by a great crew of Facility Attendants, this growing revenue generating endeavour emphasizes the Galt's focus of being a meeting place for community members and visitors. Weddings, lectures, announcements, workshops, meetings, retirement parties and other receptions were held at the Galt. Lea-Ann was a Finalist for the Lethbridge Chamber of Commerce FIRE Awards: Events & Conferences category.*

YEAR	# of paid bookings	Total Attendance
2009	187	12,917
2008	183	14,510
2007	158	13,072

Visitor Services

*Managed by Michelle Christensen, the information desk and Museum Store are a hopping place as the central information, membership and ticket sales centre and retail facility and is looked after by capable and welcoming staff. The Store carries work by local and area artists, a great selection of locally published books, jewellery, exhibit related toys and more. The Visitor Services group looks after the enjoyment and well-being of all our visitors. Bobbie Fox was a Finalist for the Lethbridge Chamber of Commerce FIRE Awards: Attractions category.*

## Special Events

Lori Harasem is the Special Events Coordinator for the Galt. Once again in 2009 she was a finalist for the Lethbridge Chamber of Commerce FIRE Awards: Events and Conferences category. In her half time position as an event coordinator with the Galt, she coordinated the following fundraisers and cultural and community events in 2009:

### Scotch & Burns (January)

*This year we celebrated the 250<sup>th</sup> birthday of Robbie Burns. This sold-out event, with bagpipes, drummers, dancers, haggis, and Scotch tasting is presented at the request of and with support from the Scottish community.*

### Eggstravaganza (April)

*Themed around the Everett Soop exhibit, this year's event included cartooning lessons and meeting Canadian Gold Medal winning Paralympian, Joanne Kelly. Children got to try wheelchair basketball and see Joanne's medals and ask her questions about life in a wheelchair. The normal Easter activities like egg decorating, visits from the Easter Bunny and family activities and crafts also took place.*

### Taste of Downtown (May)

*This event is the annual Galt fundraiser held for the Historic Lethbridge Festival that allows ticketholders to sample foods and beverages at many downtown restaurants. The event sold out in three days.*

### Scenic Plaza Whoop-Up Days BBQ (August)

*A BBQ held on the Galt patio following the annual Whoop Up Days parade, this event is organized with the businesses in Scenic Plaza. Funds raised this year were donated to the Lethbridge Senior Citizen Organization.*

### Galt Beer Tasting (September)

*This event serves as a friend and a fundraiser for the museum each year and sells out annually. The history of beer is examined, while attendees were able to sample over 40 beers, 20 wines and a dozen spirits. This event's sponsors doubled in size over past years.*

## Rocky Horror Picture Show screenings (October)

*The second time this event was offered by the Galt, two screenings were offered with one being a Halloween midnight showing. This event serves as a friend and a fundraiser and the Galt received national attention for this event in the Canadian Museums Association journal "MUSE" in 2009.*

## Volunteer Program

The Galt Museum & Archives continues to have a very active and involved volunteer program, with waiting lists in many departments. Coordinator Lori Harasem continued to diversify the volunteer program in 2009 by working with volunteers from Katimavik, the University of Lethbridge Applied Studies department, Lethbridge College's Service Learning program, Allan Watson Work Experience students, National Honours Students, and one student from Grant McEwan's Culture Management program. We had 3 major award winners in the Leaders of Tomorrow awards. We are down by 2 volunteers compared to 2008, but an increase in more than 700 hours over the year before.

	Volunteers *	Hours **	\$ value based on \$17/hr
Archives	13	2680	\$45,560.00
Board	20	275	\$ 4,675.00
Clerical	1	4	\$ 289.00
Collections	28	1119	\$19,023.00
Curatorial	57	198	\$ 3,366.00
Events	101	949	\$16,133.00
Exhibit Design	8	66	\$ 1,122.00
Friends of the Galt	14	249	\$ 4,233.00
Fund Development	31	477	\$ 8,109.00
Health and Safety	12	63	\$ 1,071.00
Marketing	22	197	\$ 3,349.00
Museum Store	12	218	\$ 3,706.00
Programming	105	2144	\$36,448.00
Volunteer Coordination	39	134	\$ 2,278.00
General Orientations	41	74	\$ 1,258.00
<b>TOTALS</b>	<b>244 *</b>	<b>8,847</b>	<b>\$150,399.00</b>

\* Individual volunteers

\*\* Hours reflect reported hours as of Jan 2010.

## Marketing

Overall marketing – including design work of posters, advertising, and brochures, website maintenance and communications – is overseen by Anine Vonkeman, who continues to represent the Galt at local and provincial committee levels including:

- City of Lethbridge Joint Promotions
- Lethbridge Chamber of Commerce Tourism Connection
- Canadian Badlands Marketing
- Travel Alberta ALTO Awards

Generous media coverage for the Galt includes local and regional newspapers, specialty magazines and tourist publications. Coverage on local and provincial radio stations includes CKUA and CBC 1010 and TV such as Citytv and SHAW Television. Increasingly, local websites and blogs are also including Galt happenings.

The Galt participated in Global's Wedding Wish endeavour by providing the Viewing Gallery for the reception and patio for the outdoor ceremony.

We participated in coupon programs such as the Canadian Museum's Association Kellogg's coupons and expanded on the pilot project with Fort Whoop-Up National Historic Site by adding Nikka Yuko Japanese Gardens – a 3 for 1 site admission coupon was available at all three locations.

Joint marketing initiatives were undertaken with City of Lethbridge attractions, as well as the Lethbridge Lodge Hotel & Conference Centre through Travel Alberta's Holiday Card Package.

The Galt placed third in the Whoop-Up Days window decorating contest; we hosted a Lethbridge Chamber of Commerce Mix 'N Mingle; and promoted Facility Rentals at Chamber Business After Hours.

### PRINCIPLE MARKETS

- Citizens of and visitors to Lethbridge and southwest Alberta
- Researchers
- Educators and students
- People throughout the world seeking information via our website and publications.

## WEBSTATS

### www.galtmuseum.com

1st full year of google analytics

- 27,274 visits | 71.25% new | 1.9% dial-up
- 84,548 pageviews | 3.10 pages/visit | 2.2 min
- Top Pages: home page, archives [7.92%], exhibits [7.18%], visitors [5.31%], events [5.11%]
- Visitors from 100 countries: 24,000 CA | 1900 US | 300 UK | 153 GER | 93 OZ
- 16.5% Direct traffic [4491]  
27.5% referred traffic [7490 visits from 432 sources, largest referrer is lethbridge.ca with 38%, 3.2% from Facebook]  
56% search engines [15,299]

FLICKR: The GaltMuseum photo site expanded with the *In Pursuit of Fair Trade* collection [3 different sets], and the summer *Community Views* project of community-submitted bridge photos: received 55,000 views in 5 months with the partnership of TriCube Media which maintains the *Lethbridge Herald* website.

In October, the Galt became the 28<sup>th</sup> international and second Canadian partner on FLICKR THE COMMONS – an archival images initiative bringing attention to the world's historic photographs. By year-end our 150 photos had been seen more than 65,000 times, 99 have been favourited, and 64 have been commented on. 195 people have added us as their contact to be notified of new uploads.

FACEBOOK: *Updated by Lori, Bobbie and Anine*

- 150 fans by year-end most from Lethbridge, Calgary, Edmonton, Red Deer. Activity increased from mid-July.
- 28 % Male | 66% Female
- 19% 18-24 | 50% 25-44 | 24% 45+ | 2% teens

BLOG *Maintained in 2009 by Lori, Belinda and Anine*

- 744 visits | 77.96% new
- 1,312 pageviews | 1.76 pages/visit | 1.16 min
- Top Pages: home page, Sicks Brewery Bottle [8.46%], Sorry to Break Your Heart [3,28%], Do You Read Exhibit Labels? [2.52%]

TWITTER *300 followers by year-end* incl. Media, museum colleagues, local and area residents, marketers

stories unfolding...



## Our Gardens

### The Nurses' Garden

The life-sized bronze statue, commissioned with the support of the Galt School of Nursing Alumnae Association, Heart of Our City and other donors from local sculptor Don Toney, was unveiled at the Annual Nurses' banquet. It was unveiled by retired GSNA Treasurer Joanna Wilson, who has since passed away. Our south garden saw the additional placement of 35 sponsored bricks to the 250 already in place. Flowers and shrubs, known to be in Lethbridge gardens around 1910, were planted this year. Thank you to the Galt Nurses for the extraordinary commitment to the garden.

### The gift of the maquette

A smaller version of the statue was gifted to the Galt Museum & Archives on the evening of the dedication by George Nyhoff with the inscription:

*"In recognition of my mother Maurine, my wife Sharron  
& all graduates from the GSN for their dedication  
to their nursing profession."*

Thank you George and Sharron.

### The Lethbridge Horticulture Society Garden

After several years of planning, planting and growing, the Lethbridge & District Horticultural Society officially opened their Centennial Native Prairie Plant Garden at the entrance to the Galt Museum & Archives on Monday, September 28.

The garden project has been an opportunity for three organizations – the Lethbridge & District Horticultural Society, Alberta Native Plant Council and Galt Museum & Archives - to partner on a community beautification project with the aim to know, grow and show native prairie plants.

The design features a variety of native wildflowers, grasses and woody plants with attractive flowers in a continuous progression through the growing season, as well as autumn leaf colour, seed heads, fruit, or interesting bark so the garden is appealing in all four seasons.

The plants are placed similar to how they would grow in the river valley. Shade tolerant species are planted on the slope against the north wall of the museum, while the most drought tolerant species are located on the steep, southwest-facing slope. The garden contains more than forty species of native plants.

Thank you to the team of volunteers responsible for this beautiful garden. The Galt Board, staff and volunteers will continue building the landscape for the enjoyment of our citizens and visitors.



## 2009 DONORS &amp; SPONSORS

The Galt is grateful for the support it receives for our programs, events, exhibits and operations by the community. We would like to recognize individuals, corporations and organizations for their sponsorship, donations and in-kind support in 2009:

<i>360 Inspired Cuisine</i>	<i>Beverly Copeland</i>	<i>Ron and Wendy</i>	<i>Lethbridge Highland</i>
<i>Wendy Aitkens</i>	<i>Allan Corbett</i>	<i>Hammerback</i>	<i>Dancers</i>
<i>Al Azhar Shriners Society</i>	<i>Country Kitchen Catering</i>	<i>Peggy Harker</i>	<i>Lethbridge Historical</i>
<i>Garry Allison</i>	<i>CPR</i>	<i>Lori Harasem</i>	<i>Society</i>
<i>Mary Anderson</i>	<i>Crazy Cakes</i>	<i>Helen Haynes</i>	<i>Lethbridge living Magazine</i>
<i>Bob and Shirley Anderson</i>	<i>Joan Croskery</i>	<i>Bob and Marilyn Heaton</i>	<i>Lethbridge Web Design</i>
<i>Andrew Hilton Wine &amp;</i>	<i>Jim and Barb</i>	<i>Helen Schuler</i>	<i>Elaine Liebelt</i>
<i>Spirits</i>	<i>Cunningham</i>	<i>Nature Centre</i>	<i>T. Frank Lightbound</i>
<i>APEGGA</i>	<i>Cupper's Coffee Company</i>	<i>Brad and Trudy Hembroff</i>	<i>Litwin Photography</i>
<i>James Asplund</i>		<i>Henotic Restaurant</i>	<i>Marie Locke</i>
<i>Athabasca University</i>	<i>Carol Darmody</i>	<i>Heritage Park Historical</i>	<i>Lenora Lumley</i>
<i>Atlas Coal Mine National</i>	<i>DBS Environmental</i>	<i>Village</i>	
<i>Historic Site</i>	<i>Aimee de Valois</i>	<i>Jim Horne</i>	<i>M &amp; K Homes</i>
	<i>Pat DeBoer</i>	<i>Bill and Faye Hurst</i>	<i>Patricia MacFarlane</i>
<i>Robert and Gloria Baker</i>	<i>Desert Wind Bellydance</i>	<i>Independent order of Odd</i>	<i>Donald and Margaret</i>
<i>Betty Barthel</i>	<i>Studios</i>	<i>Fellows</i>	<i>Mackay</i>
<i>Fran Bertrand</i>	<i>Diaego</i>	<i>IODE</i>	<i>Mac and Barb MacLean</i>
<i>Ross Bertrand</i>	<i>Jacob and Irma Dogterom</i>		<i>Martin and Michelle</i>
<i>Best Western Heidelberg</i>	<i>Joyce Doumeng</i>	<i>J A Matthew Architect Ltd.</i>	<i>Madge</i>
<i>Inn</i>	<i>Barbara Doyle</i>	<i>Charles and Pat James</i>	<i>Nello and Rose Marano</i>
<i>Big Rock Breweries</i>	<i>Eagle Commodities Ltd.</i>	<i>Sharon Jobe</i>	<i>Mark Anthony Group</i>
<i>Cheryl Boehr</i>	<i>Edith Cavell 25 Order of</i>	<i>Pauline Johnston</i>	<i>Sam and Marg Matheson</i>
<i>May Bolokoski</i>	<i>the Eastern Star</i>	<i>Wendy Johnston</i>	<i>Eileen Matteotti</i>
<i>Norma Bosman</i>	<i>Loralee Edwards</i>	<i>JoJo Garden Design</i>	<i>Ken and Bonnie May</i>
<i>Bottom's Up</i>	<i>Pearl Ehlert</i>	<i>and Consulting</i>	<i>Jacob and Karen McBeath</i>
<i>Joan Boulton</i>	<i>Marion Ellerman</i>		<i>David McDonald</i>
<i>Burnbrae Farms</i>	<i>Esplanade Arts &amp; Heritage</i>	<i>M. Kanashiro</i>	<i>Frances McHardy</i>
<i>Burning Ground Studios</i>	<i>Centre</i>	<i>Sue Kanashiro</i>	<i>McKillop Insurance &amp;</i>
<i>Kris Butler</i>	<i>Esquire's Coffee House</i>	<i>Bob and Janice Kemp</i>	<i>Registry Services</i>
<i>Barry Butlin</i>	<i>Julia Ewing</i>	<i>Lorne Kester</i>	<i>Faye McMillan</i>
	<i>Express Coffee &amp; Tea</i>	<i>John Kimber</i>	<i>Joseph McNeely</i>
<i>Cadbury Trebor Allan</i>		<i>Kirkwood Group</i>	<i>Mary-Anne McTrowe and</i>
<i>Canada Safeway Limited</i>	<i>Anne Fairfield</i>	<i>Shirley Kooy</i>	<i>David Hoffos</i>
<i>Canadian Paralympic</i>	<i>Jim Foreman</i>	<i>Jean Korth</i>	<i>Marina Mikuliak</i>
<i>Team</i>		<i>Andrew Kovacs</i>	<i>Mocha Cabana</i>
<i>Cargill Ltd</i>	<i>Peter Gaetz</i>	<i>Henry Kurina</i>	<i>Molson Breweries</i>
<i>Carl R. Sams II</i>	<i>Gardenchick</i>		<i>Molson Coors</i>
<i>Photography Inc.</i>	<i>Elizabeth Garton</i>	<i>LA Chefs</i>	<i>Mongolie Grill</i>
<i>David Carter</i>	<i>Kendall Gibson</i>	<i>Labatt's</i>	<i>Hans-Henning Muendel</i>
<i>Judy Chan</i>	<i>Jack and Susan Giffen</i>	<i>Esther Lambert</i>	<i>and Bev Muendel</i>
<i>Lance Chong</i>	<i>Gil'z Liquor Ltd.</i>	<i>William and Nancy Latta</i>	<i>Atherstone</i>
<i>Bob and Carolla Christie</i>	<i>Derwyn Grant</i>	<i>Robert Layton</i>	
<i>City of Regina Archives</i>	<i>Lynn Gregson</i>	<i>Legion Pipe and Drum</i>	<i>Ken and Vickie Nakagama</i>
<i>ClubandPub.ca</i>		<i>Band</i>	<i>Katie Nakagawa</i>
<i>Mary Combs</i>	<i>Dennis Haibeck</i>	<i>Corrine Lembicz</i>	<i>Dean and Edie Newton</i>
<i>Doug and Sally Connelly</i>	<i>George Hall</i>	<i>Marguerite Lengyel</i>	<i>Henrietta Nieboer</i>

Kim Nielsen  
Thomas and Trudy Niggli  
Nikkei Cultural Society of  
Lethbridge and Area  
Murielle Nikles  
R. Philip M. North

Fay Oakes  
Brian O'Connell  
Oldman River Regional  
Services Commission  
Edith Olson  
Doreen Orion  
Ayako Otsuka

Page!Break Café  
Pak Nak  
Panago Pizza  
Richard and Theresa  
Papworth  
Richard and Gloria  
Papworth  
Park Meadows Safeway  
Bridget Pastoor  
Penny Coffee House  
Pepsi Bottling Group  
(Canada) Ltd  
Nancy Percevault  
Deanna Peters  
Duane Petluk  
Philippe Dandurand  
Wines Ltd.

Playgoers of Lethbridge  
Plum  
PMA Canada  
Luramae Porkka  
R. Porter  
Pratt & Whitney Canada  
Inc.  
Lucelle and Lee Prindle  
Pyramid Entertainment

Cecil and Gladys Redfern  
Regent Restaurant  
Remington Carriage  
Museum  
Edward and Angie Rice  
Keith Robin  
Judy Robins  
George Robison  
RockAuto.com  
Margaret Ross  
Round Street Café  
Kendall Russell

Les Santa  
David Sarsfield  
Roy and Pat Sassa  
Save On Foods  
Pete and Alice Schuld  
Servus Credit Union Ltd  
Beverly Shimazaki  
Floyd Sillito

Sleeman Breweries Ltd  
Leona Smith  
Timothy Smith  
June Smith  
Barry and Marion  
Snowden  
Southern Alberta  
Community Living  
Association  
Spider Beverages Co.  
Spiralz Accessories  
Stamping Up  
Starbucks at Chapters  
Margaret Steffensen  
Carlton and Barbara  
Stewart  
Emma Suge  
Shirley Swanson

David and Marie Ann  
Takeda  
Toshiko Tanaka  
TD Bank Financial Group  
Teamsters Canada Rail  
Conference, Division 750  
Ron Teather and Elspeth  
Nickle  
Ten Thousand Villages  
The Cup N Saucer Ltd  
Barbara Tiegs  
Marjorie Tomie

Gerald Truscott

Leslie Vaala and  
Karran Thorpe  
Janice VanCleave  
Mary Varzari  
Kalie Veres  
John and Deb Visser  
Al Vonkeman  
Aine Vonkeman  
Randolph Vos

WA Environmental  
Services Ltd.  
Laurence and Hildan  
Walker  
Sharon Waswick  
Alfred Weiss  
John and Lois Williams  
Brian Wilson  
Johanna Wilson  
Wine Cavern  
Joan Winwood  
Carolyn Wood-Pearson

Don Young and Hazel  
Mitchell

Zero Gravity Cranes &  
Rigging Inc.  
Karen Ziegler



**Statement of Operations (Unaudited)**

For the year ended December 31, 2009

	<b>Current Year</b>	<b>Prior Year</b>	<b>Annual Budget</b>
<b>Revenues</b>			
City of Lethbridge Operating Funds	\$ 1,212,286	\$ 999,000	\$ 1,212,286
Admissions	27,770	25,804	23,000
Memberships	8,963	6,811	-
Museum Store	134,247	109,214	88,000
Facility Rentals	91,378	80,067	60,950
Program Fees	17,338	16,702	10,000
Special Events	2,763	12,823	-
Archives Fees	5,005	5,685	2,200
Get Outta Town Bus Tours	7,804	4,205	-
Grants	97,735	59,510	5,000
Donations	10,787	19,941	-
<b>Total Revenues</b>	<b>\$ 1,616,075</b>	<b>\$ 1,339,762</b>	<b>\$ 1,401,436</b>
<b>Expenditures</b>			
Museum Board Expenses	\$ 8,250	\$ -	\$ 8,000
Museum Administration	338,032	218,300	285,000
Volunteer Management	38,132	-	36,707
Curatorial	93,758	84,444	90,333
Display/Gallery	72,517	82,597	86,386
Collections Management	121,062	129,127	158,594
Temporary Exhibits	74,395	39,435	26,600
Museum Store	135,566	197,993	121,353
Facility Rentals	70,685	59,365	53,052
Visitor Programs	158,657	180,129	168,087
Visitor Services	78,503	-	57,341
Special Events	48,287	-	58,458
Archives	123,854	147,713	131,735
Marketing	140,306	116,754	119,790
<b>Total Expenses</b>	<b>\$ 1,502,002</b>	<b>\$ 1,255,857</b>	<b>\$ 1,401,436</b>
<b>Surplus *</b>	<b>\$ 114,073</b>	<b>\$ 83,905</b>	<b>\$ -</b>

\* Of the 2009 surplus, \$20,000 has been allocated to the Galt Museum Capital Project to be used toward repayment of the interim financing from the Municipal Revenue Stabilization Reserve. The remaining \$94,073 will be carried forward to finance planned expenditures in 2010. (Storage Cabinets - \$45,000; Track Lighting - \$17,500; Acoustics - \$29,000)

**BOARD OF DIRECTORS**

Fred Baskerville  
Treasurer

Ryan Parker  
City Council Representative

Dr. Chris Epplett  
Vice-Chair

Tim Greenlee

Dr. Isabelle Henderson

Robin Hopkins

Lorraine [Lola] Major

Dr. Edith Olson

Dr. Lucelle Prindle  
Chair

**Ex-Officio**

Dr. Glenn Coulter  
President – Friends of the Galt

Kathy Hopkins  
City of Lethbridge Community Services

Sheila McManus  
Lethbridge Historical Society

Doug McLaughlin  
Past-President

Susan Burrows-Johnson CEO

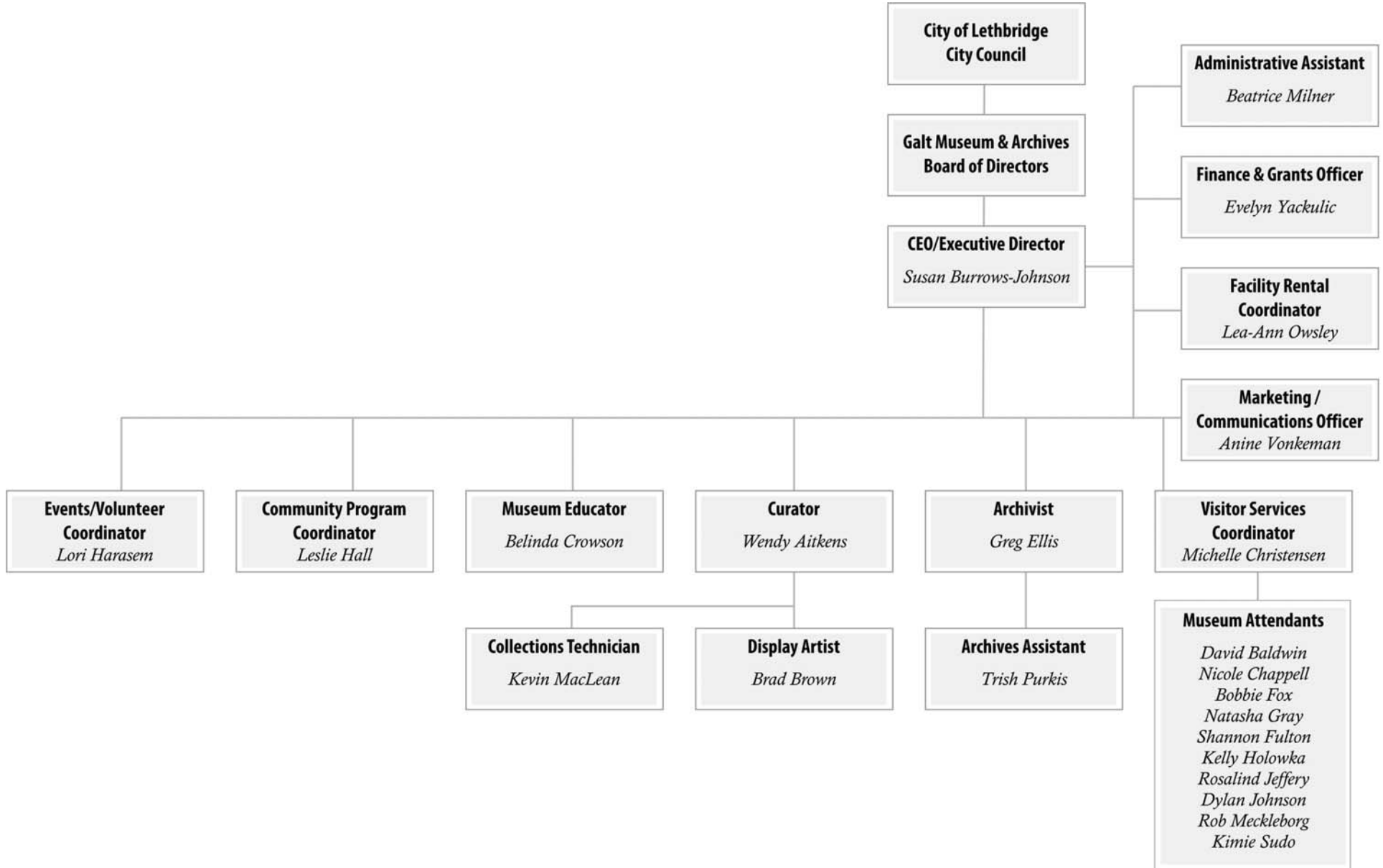
Secretary to the Board: Shirley Trowbridge / Beatrice Milner





*stories unfolding...*

**ORGANIZATIONAL CHART**



**2009 GALT COMMITTEES**

Cultural History Collections

Wendy Aitkens  
Susan Burrows-Johnson CEO  
Chris Epplett Chair  
Jean Johnstone  
Kevin MacLean  
Janay Nugent  
Lucelle Prindle  
Bill Ramp

Finance

Fred Baskerville Chair  
Susan Burrows-Johnson CEO  
Robin Hopkins  
Edith Olson  
Lucelle Prindle  
Evelyn Yackulic

Fund Development - Legacy

Fred Baskerville Chair  
Susan Burrows-Johnson CEO  
Jeff Clarke  
Glenn Coulter  
President, Friends of Galt Society  
Lori Harasem  
Isabelle Henderson  
John Hoopfer  
Lucelle Prindle

Fund Development - Annual Giving

Fred Baskerville  
Susan Burrows-Johnson CEO  
Lori Harasem  
Isabelle Henderson Chair  
Lucelle Prindle  
Silke Sodeman

Governance

Susan Burrows-Johnson CEO  
Lucelle Prindle  
Edith Olson Chair

Health & Safety

Susan Burrows-Johnson CEO  
Michelle Christensen Chair  
Jane Bruinsma  
Belinda Crowson  
Lori Harasem  
Ruth Liska  
Support and advice from Darren Price,  
Brian Gedrasik, Holly Koshey and Liisa Vann  
from City Integrated Risk Management

Nomination

Susan Burrows-Johnson CEO  
Chris Epplett  
Ryan Parker  
Lucelle Prindle Chair

Personnel

Susan Burrows-Johnson CEO  
Chris Epplett  
Lucelle Prindle Chair



Work crew posing on the scaffold for the first span of the Canadian Pacific Railway High Level Bridge at Lethbridge, 1908. Galt Museum & Archives, 1975432000



First train crossing the Canadian Pacific Railway Viaduct at Lethbridge, 1909. Galt Museum & Archives, 19640458000





Unidentified man holding a rifle posed with his bag - a 3 foot grasshopper, 1930, trick photography. Galt Museum & Archives, 19730056000

*stories unfolding...*